

Lote Tree Community Hub

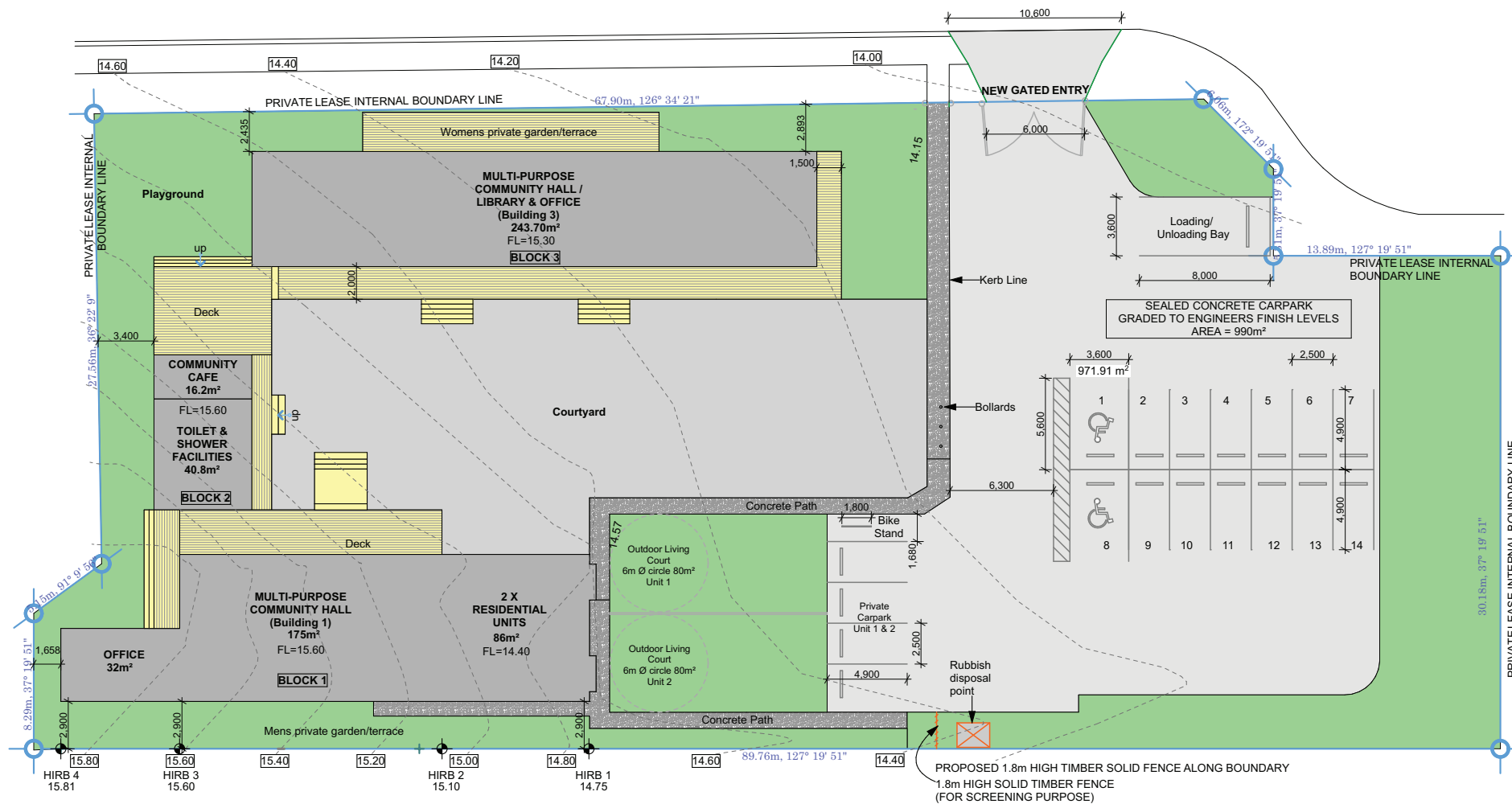
SITE PLANS



DAR AL QURAN
AUCKLAND



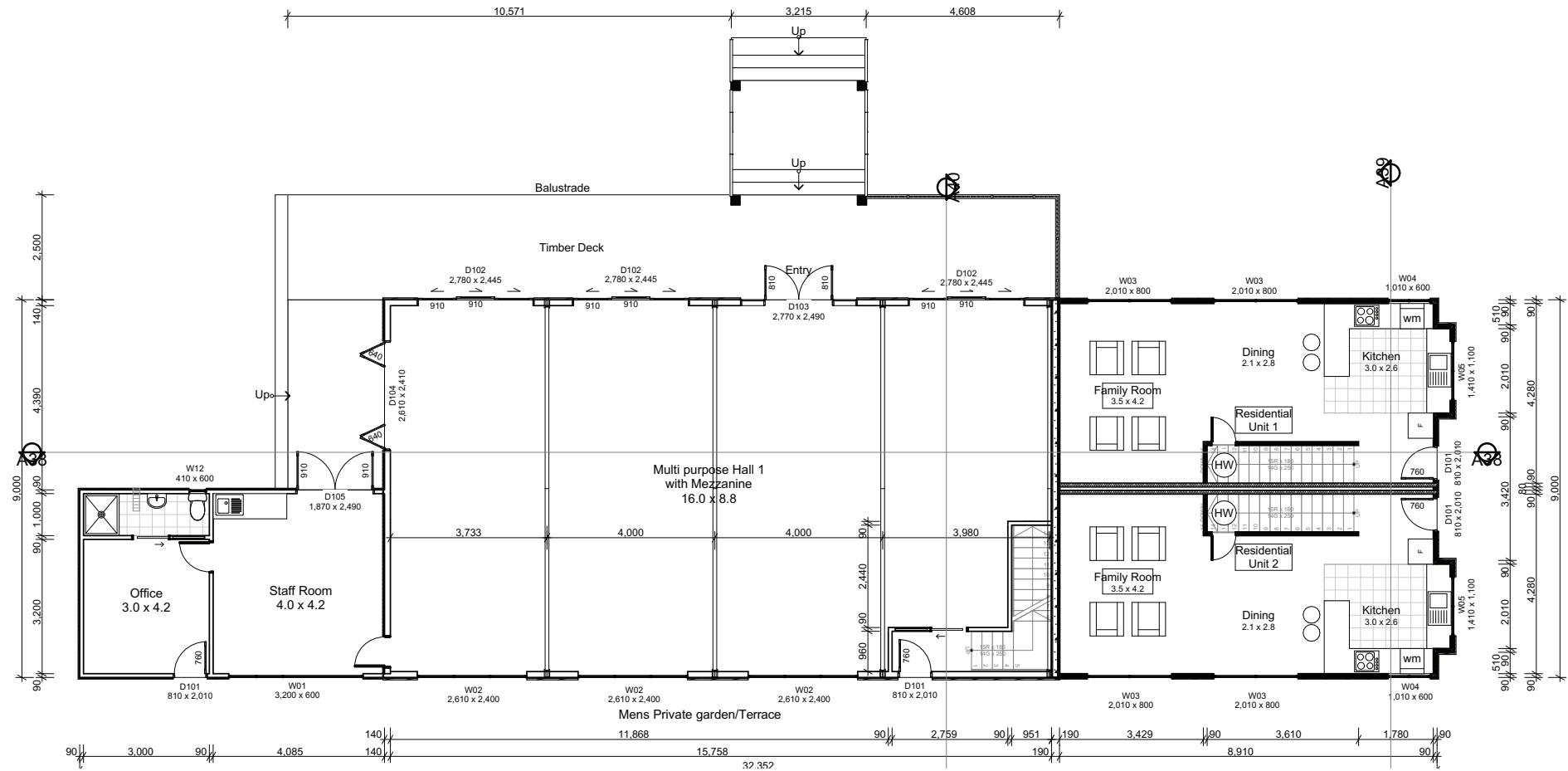
LOTE TREE
TRUST



This Site plan provides a birds eye view of the entire property. The function of the rooms can be found in the following plans.

The designs have been made utilising the vision of the The Lote Tree Trust, 'Making it easy to be Muslim in New Zealand.' A community requires a hub that fulfils a spectrum of needs.

The functions of our spaces provide our community a space for academic, spiritual, social and personal development. Furthermore the hub will provide a space for education, services and content creation that in its fruition will provide benefit and access to the wider community across New Zealand and overseas. Spaces such as the community cafe, children's playground and basketball hoops will create a community hub appealing to wider segments and diverse demographics. Resource consent has been approved, building consent is underway and an agreement has been made with a generous construction company to build at close to cost and payment to be made in instalments over 5 years.



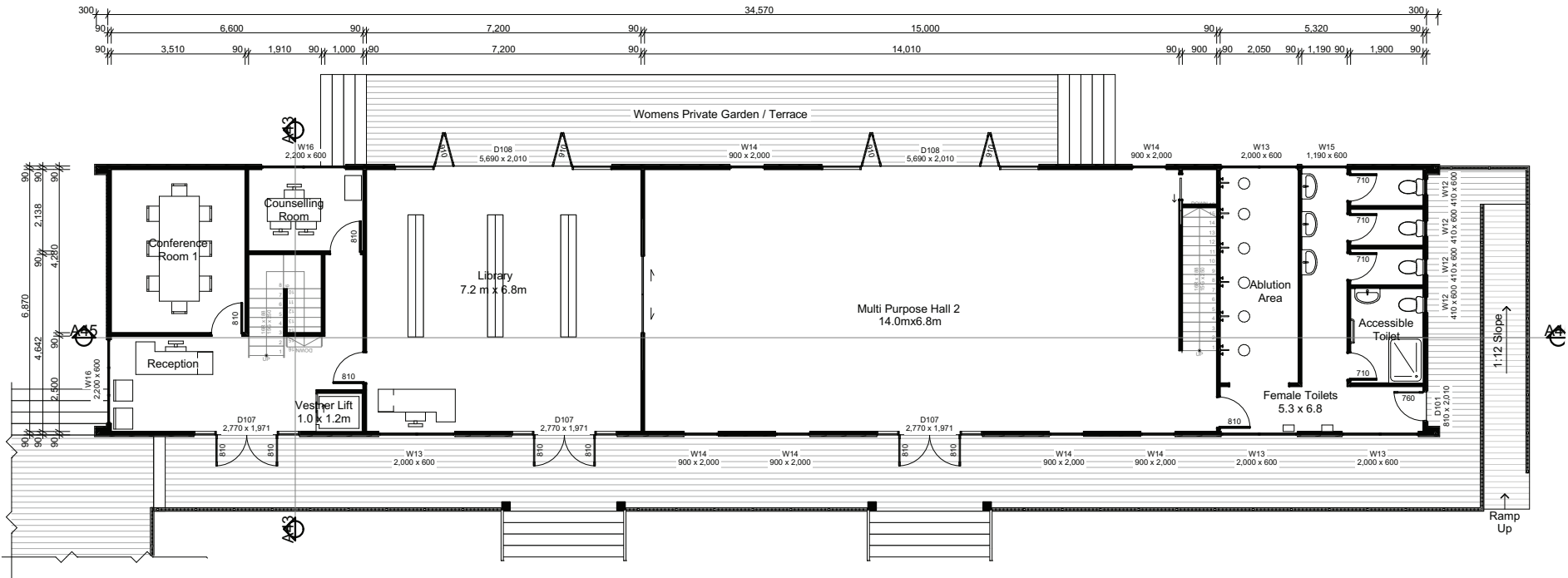
Multi-purpose hall one with mezzanine: Will primarily function as men's *musallah* where classes, prayers and gatherings will take place. The mezzanine floor is available for women to use to attend community classes, which provides access and appropriate segregation. The hall space will also be available for booking for women's programs, if they require this space rather than their dedicated space (multi-purpose hall two). This hall can also be hired externally for appropriate uses, such as *nikkahs*, functions or workshops.

Staff room: For use by teachers and for guest speakers to relax prior to commencement of programs.

Office: For headteacher & administration staff use.

Residential units: Provide housing opportunity for renters and a source of regular income for the Trust to utilise for ongoing expenses. Two story units each with a lounge, kitchen, a bathroom, two bedrooms, parking and a front yard.

Mens private garden/terrace: Outdoor private space for men.



Multi-purpose hall two: Primarily to be used as a women's *musallah* for prayers, classes and gatherings. Access to women's spaces and education services are in critical need for our community. The Lote Trust places a high importance in providing appropriate and accessible services.

Library: Will provide access to literature for our students, teachers, children & community to benefit from. Multi-purpose hall programmes can also be extended into the library, if additional space is required. The library can also be used during programmes as a children's creche.

Counselling room: For bookings for community members or wider community.

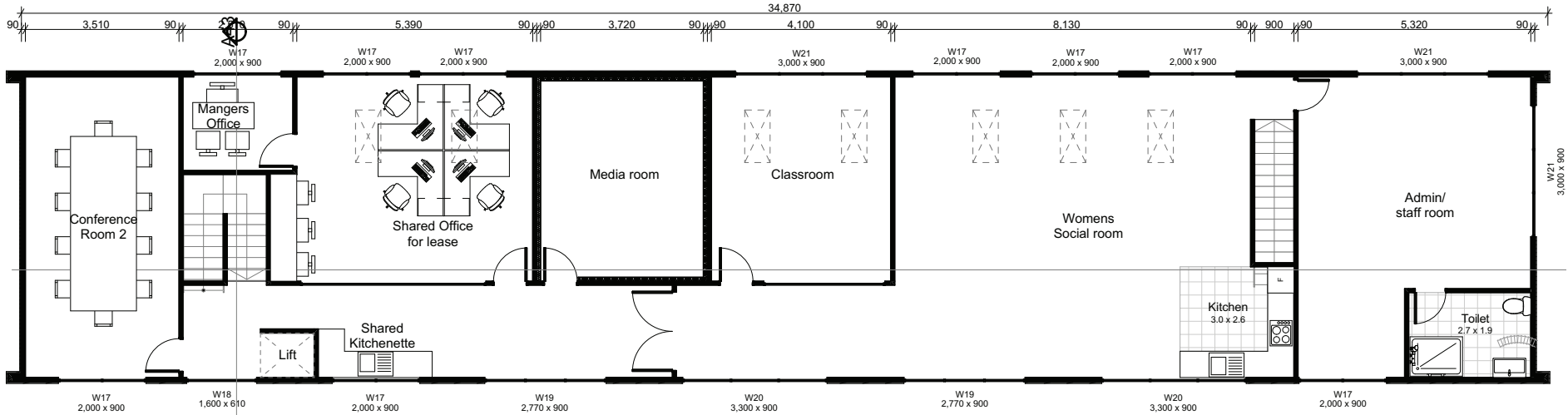
Conference room one: For bookings for community members or wider community. Can be used for meetings or as a meditation room.

Ramp access: Ramp access provides wheelchairs and strollers ability to enter all building blocks (except for the mezzanine floor in multi-purpose Hall one).

Lift: Allows accessibility to level two of this building block.

Women's private terrace/garden: For women to use as an outdoor relaxation space. Classes can also be hosted outside.

Doorway: Door between the library & lift will be locked to ensure privacy & security.



Conference Room one: For bookings for community members or wider community. Can be also used for meetings or as a meditation room.

Shared office and managers office: To be leased out to community organisations who need a space to operate from. Will provide income to The Lote Tree Trust for ongoing expenses, also provides a comfortable and community based working environment.

Media room: Will be set up with appropriate technology to do recordings, videos, interviews and other content production. Dar al Quran is commencing a foundational *shariah* program online for New Zealanders to connect and learn their essentials of faith. This room will provide quality studio equipment for that purpose and other services. Space can also be booked by the wider community for appropriate uses.

Classroom: Besides utilising the *musallah* for teaching, a spare classroom is available for use for teachers who may need a different setting or a private space when teaching.

Women's social room: A comfortable space for women to connect or to host programs that require a different setting to the *musallah*. Includes a kitchen for in-house catering.

Administration/staffroom: Private space for teachers and admin to use for meetings and work-related purposes.

Lighting: Skylights and windows throughout the building to increase natural lighting, coupled with solar panels to help provide power to the building.

Lift: To give access to the second floor of building block 2.

Hallway: Doorway between media room & classroom will be locked to create safety and privacy between Dar al Quran section & other facilities.





